



MORE SAVING, BETTER CONNECTION



BS CONDUIT & ACCESSORIES

FOR ELECTRICAL WIRING



HANGZHOU EVT ELECTRICAL CO., LTD.

Add: Huantan Industrial Zone, Jinhua Town,
Xiaoshan District, Hangzhou, 311253 China

Tel: +86 571 82452866 82450872 82351226

Fax: +86 571 82351218 ext. 801

Email: info@evt-electrical.com

Authorized Distributor



FOR PDF CATALOG PLEASE VISIT

WWW.EVT-ELECTRICAL.COM

UL the standard in safety Underwriters Laboratories

PLM: 830475 No. 3 Date: 2010-12-03 Revision: 2010-12-03

FOLLOW-UP SERVICE PROCEDURE
1725.74

SUBJECT: METALLIC TUBING SYSTEMS (EVT,19A7)

Manufacturer: HANGZHOU EVT ELECTRICAL CO. LTD.
ADDRESS: HUANTAN INDUSTRIAL ZONE, JINHUA TOWN, XIAOSHAN DISTRICT, HANGZHOU CITY, ZHEJIANG PROVINCE, P.R. CHINA

Applicant: HANG AS MANUFACTURING
ADDRESS: HANG AS MANUFACTURING
ADDRESS: HANG AS MANUFACTURING

This procedure authorizes the above manufacturer to use the marking specified by Underwriters Laboratories Inc. (UL) and the additional licensee of UL only as products covered by this procedure, in accordance with the applicable UL Service Agreement.

The prescribed Mark of Marking shall be used only as the above manufacturer's mark on such products which comply with this procedure and any other applicable requirements.

The procedure contains information for the use of the above named Manufacturer and representatives of Underwriters Laboratories Inc. and is not to be used for any other purpose, in its whole or in part, and that it will be returned to Underwriters Laboratories Inc. (UL) and the additional licensee of UL as soon as practicable.

This procedure, and any subsequent revision, is the property of Underwriters Laboratories Inc. (UL) and the additional licensee of UL and is not transferable.

Underwriters Laboratories Inc.

Stephen Brown Director, Vice President, Global Follow-Up Service Operations
William R. Ceryak Director, North American Certification Program

NGV

Certificate

HANGZHOU EVT ELECTRICAL CO., LTD.
ADDRESS: HUANTAN INDUSTRIAL ZONE, JINHUA TOWN, XIAOSHAN DISTRICT, HANGZHOU CITY, ZHEJIANG PROVINCE, P.R. CHINA

According to your organization's application, our center carried out audit and certification in accordance with the requirements for Quality Management System (GB/T19001-2008 / ISO9001:2008), through the assessment, it is in accordance with the requirements which set up the quality management system.

The scope of the certified QMS is:

MANUFACTURING OF ELECTRICAL METALLIC TUBINGS AND PIPE FITTINGS.

Registration No. of Certificate: 051130374881M
Date of the Issued Certificate: 02-12-2011
Term of the Certificate's Validity: 02-12-2013-01-12-2016
Date of the First Authentication: 04-12-2011

If you stick the first surveillance mark after the date of surveillance expires, the certificate is invalid.

The first surveillance Mark with here The second surveillance Mark with here

Beijing NGV Certification Centre CNAS IAF

Director Wangmei

Attestation of Conformity
No. NB 14 06 86602 001

Holder of Certificate: Hangzhou EVT Electrical Co., Ltd.
Huantan Industrial Zone, Jinhua Town, Xiaoshan District, 311033 Hangzhou, PEOPLE'S REPUBLIC OF CHINA

Product: **Pliable plastic conduits Flexible Conduit and Accessories**

The Attestation of Conformity is issued on a voluntary basis according to the Low Voltage Directive 2006/95/EC relating to electrical equipment designed for use within certain voltage limits. It confirms that the tested equipment complies with the principal protection requirements of the directive. It refers only to the particular samples submitted for testing and certification. See also notes enclosed.

Test report no.: T04101322901-00

Date: 2014-06-23

CE After preparation of the necessary technical documentation as well as the EC conformity declaration the required CE marking can be affixed on the product. Other relevant directives have to be observed.

Page 1 of 2

TUV SUD Product Service GmbH | Zertifikatsstelle | Röhrenstraße 61 | 80339 München | Germany | TUV®

Attestation of Conformity
No. NB 14 06 86602 001

Model(s): **GFC Series, PFC Series, LTC Series, 150 Series, 100 Series, 470 Series, 490 Series, 401 Series, 411 Series**

Parameters:

Parameter	Model	Specification
Flexible Steel Conduit	GFC series	38" 1/2-3/4" 1/2" 1.14" 1.5-1/2" 2" 2.102" 2.4" 2.82" 3.15" 3.5" 3.94" 4.37" 4.79" 5.21" 5.64" 6.06" 6.48" 6.90" 7.32" 7.74" 8.16" 8.58" 9.00" 9.42" 9.84" 10.26" 10.68" 11.10" 11.52" 11.94" 12.36" 12.78" 13.20" 13.62" 14.04" 14.46" 14.88" 15.30" 15.72" 16.14" 16.56" 16.98" 17.40" 17.82" 18.24" 18.66" 19.08" 19.50" 19.92" 20.34" 20.76" 21.18" 21.60" 22.02" 22.44" 22.86" 23.28" 23.70" 24.12" 24.54" 24.96" 25.38" 25.80" 26.22" 26.64" 27.06" 27.48" 27.90" 28.32" 28.74" 29.16" 29.58" 29.99" 30.41" 30.83" 31.25" 31.67" 32.09" 32.51" 32.93" 33.35" 33.77" 34.19" 34.61" 35.03" 35.45" 35.87" 36.29" 36.71" 37.13" 37.55" 37.97" 38.39" 38.81" 39.23" 39.65" 40.07" 40.49" 40.91" 41.33" 41.75" 42.17" 42.59" 43.01" 43.43" 43.85" 44.27" 44.69" 45.11" 45.53" 45.95" 46.37" 46.79" 47.21" 47.63" 48.05" 48.47" 48.89" 49.31" 49.73" 50.15" 50.57" 50.99" 51.41" 51.83" 52.25" 52.67" 53.09" 53.51" 53.93" 54.35" 54.77" 55.19" 55.61" 56.03" 56.45" 56.87" 57.29" 57.71" 58.13" 58.55" 58.97" 59.39" 59.81" 60.23" 60.65" 61.07" 61.49" 61.91" 62.33" 62.75" 63.17" 63.59" 64.01" 64.43" 64.85" 65.27" 65.69" 66.11" 66.53" 66.95" 67.37" 67.79" 68.21" 68.63" 69.05" 69.47" 69.89" 70.31" 70.73" 71.15" 71.57" 71.99" 72.41" 72.83" 73.25" 73.67" 74.09" 74.51" 74.93" 75.35" 75.77" 76.19" 76.61" 77.03" 77.45" 77.87" 78.29" 78.71" 79.13" 79.55" 79.97" 80.39" 80.81" 81.23" 81.65" 82.07" 82.49" 82.91" 83.33" 83.75" 84.17" 84.59" 85.01" 85.43" 85.85" 86.27" 86.69" 87.11" 87.53" 87.95" 88.37" 88.79" 89.21" 89.63" 90.05" 90.47" 90.89" 91.31" 91.73" 92.15" 92.57" 92.99" 93.41" 93.83" 94.25" 94.67" 95.09" 95.51" 95.93" 96.35" 96.77" 97.19" 97.61" 98.03" 98.45" 98.87" 99.29" 99.71" 100.13" 100.55" 100.97" 101.39" 101.81" 102.23" 102.65" 103.07" 103.49" 103.91" 104.33" 104.75" 105.17" 105.59" 106.01" 106.43" 106.85" 107.27" 107.69" 108.11" 108.53" 108.95" 109.37" 109.79" 110.21" 110.63" 111.05" 111.47" 111.89" 112.31" 112.73" 113.15" 113.57" 113.99" 114.41" 114.83" 115.25" 115.67" 116.09" 116.51" 116.93" 117.35" 117.77" 118.19" 118.61" 119.03" 119.45" 119.87" 120.29" 120.71" 121.13" 121.55" 121.97" 122.39" 122.81" 123.23" 123.65" 124.07" 124.49" 124.91" 125.33" 125.75" 126.17" 126.59" 127.01" 127.43" 127.85" 128.27" 128.69" 129.11" 129.53" 129.95" 130.37" 130.79" 131.21" 131.63" 132.05" 132.47" 132.89" 133.31" 133.73" 134.15" 134.57" 134.99" 135.41" 135.83" 136.25" 136.67" 137.09" 137.51" 137.93" 138.35" 138.77" 139.19" 139.61" 140.03" 140.45" 140.87" 141.29" 141.71" 142.13" 142.55" 142.97" 143.39" 143.81" 144.23" 144.65" 145.07" 145.49" 145.91" 146.33" 146.75" 147.17" 147.59" 148.01" 148.43" 148.85" 149.27" 149.69" 150.11" 150.53" 150.95" 151.37" 151.79" 152.21" 152.63" 153.05" 153.47" 153.89" 154.31" 154.73" 155.15" 155.57" 155.99" 156.41" 156.83" 157.25" 157.67" 158.09" 158.51" 158.93" 159.35" 159.77" 160.19" 160.61" 161.03" 161.45" 161.87" 162.29" 162.71" 163.13" 163.55" 163.97" 164.39" 164.81" 165.23" 165.65" 166.07" 166.49" 166.91" 167.33" 167.75" 168.17" 168.59" 169.01" 169.43" 169.85" 170.27" 170.69" 171.11" 171.53" 171.95" 172.37" 172.79" 173.21" 173.63" 174.05" 174.47" 174.89" 175.31" 175.73" 176.15" 176.57" 176.99" 177.41" 177.83" 178.25" 178.67" 179.09" 179.51" 179.93" 180.35" 180.77" 181.19" 181.61" 182.03" 182.45" 182.87" 183.29" 183.71" 184.13" 184.55" 184.97" 185.39" 185.81" 186.23" 186.65" 187.07" 187.49" 187.91" 188.33" 188.75" 189.17" 189.59" 190.01" 190.43" 190.85" 191.27" 191.69" 192.11" 192.53" 192.95" 193.37" 193.79" 194.21" 194.63" 195.05" 195.47" 195.89" 196.31" 196.73" 197.15" 197.57" 197.99" 198.41" 198.83" 199.25" 199.67" 200.09" 200.51" 200.93" 201.35" 201.77" 202.19" 202.61" 203.03" 203.45" 203.87" 204.29" 204.71" 205.13" 205.55" 205.97" 206.39" 206.81" 207.23" 207.65" 208.07" 208.49" 208.91" 209.33" 209.75" 210.17" 210.59" 211.01" 211.43" 211.85" 212.27" 212.69" 213.11" 213.53" 213.95" 214.37" 214.79" 215.21" 215.63" 216.05" 216.47" 216.89" 217.31" 217.73" 218.15" 218.57" 218.99" 219.41" 219.83" 220.25" 220.67" 221.09" 221.51" 221.93" 222.35" 222.77" 223.19" 223.61" 224.03" 224.45" 224.87" 225.29" 225.71" 226.13" 226.55" 226.97" 227.39" 227.81" 228.23" 228.65" 229.07" 229.49" 229.91" 230.33" 230.75" 231.17" 231.59" 232.01" 232.43" 232.85" 233.27" 233.69" 234.11" 234.53" 234.95" 235.37" 235.79" 236.21" 236.63" 237.05" 237.47" 237.89" 238.31" 238.73" 239.15" 239.57" 240.00" 240.42" 240.84" 241.26" 241.68" 242.10" 242.52" 242.94" 243.36" 243.78" 244.20" 244.62" 245.04" 245.46" 245.88" 246.30" 246.72" 247.14" 247.56" 247.98" 248.40" 248.82" 249.24" 249.66" 250.08" 250.50" 250.92" 251.34" 251.76" 252.18" 252.60" 253.02" 253.44" 253.86" 254.28" 254.70" 255.12" 255.54" 255.96" 256.38" 256.80" 257.22" 257.64" 258.06" 258.48" 258.90" 259.32" 259.74" 260.16" 260.58" 261.00" 261.42" 261.84" 262.26" 262.68" 263.10" 263.52" 263.94" 264.36" 264.78" 265.20" 265.62" 266.04" 266.46" 266.88" 267.30" 267.72" 268.14" 268.56" 268.98" 269.40" 269.82" 270.24" 270.66" 271.08" 271.50" 271.92" 272.34" 272.76" 273.18" 273.60" 274.02" 274.44" 274.86" 275.28" 275.70" 276.12" 276.54" 276.96" 277.38" 277.80" 278.22" 278.64" 279.06" 279.48" 279.90" 280.32" 280.74" 281.16" 281.58" 282.00" 282.42" 282.84" 283.26" 283.68" 284.10" 284.52" 284.94" 285.36" 285.78" 286.20" 286.62" 287.04" 287.46" 287.88" 288.30" 288.72" 289.14" 289.56" 289.98" 290.40" 290.82" 291.24" 291.66" 292.08" 292.50" 292.92" 293.34" 293.76" 294.18" 294.60" 295.02" 295.44" 295.86" 296.28" 296.70" 297.12" 297.54" 297.96" 298.38" 298.80" 299.22" 299.64" 300.06" 300.48" 300.90" 301.32" 301.74" 302.16" 302.58" 303.00" 303.42" 303.84" 304.26" 304.68" 305.10" 305.52" 305.94" 306.36" 306.78" 307.20" 307.62" 308.04" 308.46" 308.88" 309.30" 309.72" 310.14" 310.56" 310.98" 311.40" 311.82" 312.24" 312.66" 313.08" 313.50" 313.92" 314.34" 314.76" 315.18" 315.60" 316.02" 316.44" 316.86" 317.28" 317.70" 318.12" 318.54" 318.96" 319.38" 319.80" 320.22" 320.64" 321.06" 321.48" 321.90" 322.32" 322.74" 323.16" 323.58" 324.00" 324.42" 324.84" 325.26" 325.68" 326.10" 326.52" 326.94" 327.36" 327.78" 328.20" 328.62" 329.04" 329.46" 329.88" 330.30" 330.72" 331.14" 331.56" 331.98" 332.40" 332.82" 333.24" 333.66" 334.08" 334.50" 334.92" 335.34" 335.76" 336.18" 336.60" 337.02" 337.44" 337.86" 338.28" 338.70" 339.12" 339.54" 339.96" 340.38" 340.80" 341.22" 341.64" 342.06" 342.48" 342.90" 343.32" 343.74" 344.16" 344.58" 345.00" 345.42" 345.84" 346.26" 346.68" 347.10" 347.52" 347.94" 348.36" 348.78" 349.20" 349.62" 350.04" 350.46" 350.88" 351.30" 351.72" 352.14" 352.56" 352.98" 353.40" 353.82" 354.24" 354.66" 355.08" 355.50" 355.92" 356.34" 356.76" 357.18" 357.60" 358.02" 358.44" 358.86" 359.28" 359.70" 360.12" 360.54" 360.96" 361.38" 361.80" 362.22" 362.64" 363.06" 363.48" 363.90" 364.32" 364.74" 365.16" 365.58" 366.00" 366.42" 366.84" 367.26" 367.68" 368.10" 368.52" 368.94" 369.36" 369.78" 370.20" 370.62" 371.04" 371.46" 371.88" 372.30" 372.72" 373.14" 373.56" 373.98" 374.40" 374.82" 375.24" 375.66" 376.08" 376.50" 376.92" 377.34" 377.76" 378.18" 378.60" 379.02" 379.44" 379.86" 380.28" 380.70" 381.12" 381.54" 381.96" 382.38" 382.80" 383.22" 383.64" 384.06" 384.48" 384.90" 385.32" 385.74" 386.16" 386.58" 387.00" 387.42" 387.84" 388.26" 388.68" 389.10" 389.52" 389.94" 390.36" 390.78" 391.20" 391.62" 392.04" 392.46" 392.88" 393.30" 393.72" 394.14" 394.56" 394.98" 395.40" 395.82" 396.24" 396.66" 397.08" 397.50" 397.92" 398.34" 398.76" 399.18" 399.60" 400.02" 400.44" 400.86" 401.28" 401.70" 402.12" 402.54" 402.96" 403.38" 403.80" 404.22" 404.64" 405.06" 405.48" 405.90" 406.32" 406.74" 407.16" 407.58" 408.00" 408.42" 408.84" 409.26" 409.68" 410.10" 410.52" 410.94" 411.36" 411.78" 412.20" 412.62" 413.04" 413.46" 413.88" 414.30" 414.72" 415.14" 415.56" 415.98" 416.40" 416.82" 417.24" 417.66" 418.08" 418.50" 418.92" 419.34" 419.76" 420.18" 420.60" 421.02" 421.44" 421.86" 422.28" 422.70" 423.12" 423.54" 423.96" 424.38" 424.80" 425.22" 425.64" 426.06" 426.48" 426.90" 427.32" 427.74" 428.16" 428.58" 429.00" 429.42" 429.84" 430.26" 430.68" 431.10" 431.52" 431.94" 432.36" 432.78" 433.20" 433.62" 434.04" 434.46" 434.88" 435.30" 435.72" 436.14" 436.56" 436.98" 437.40" 437.82" 438.24" 438.66" 439.08" 439.50" 439.92" 440.34" 440.76" 441.18" 441.60" 442.02" 442.44" 442.86" 443.28" 443.70" 444.12" 444.54" 444.96" 445.38" 445.80" 446.22" 446.64" 447.06" 447.48" 447.90" 448.32" 448.74" 449.16" 449.58" 450.00" 450.42" 450.84" 451.26" 451.68" 452.10" 452.52" 452.94" 453.36" 453.78" 454.20" 454.62" 455.04" 455.46" 455.88" 456.30" 456.72" 457.14" 457.56" 457.98" 458.40" 458.82" 459.24" 459.66" 460.08" 460.50" 460.92" 461.34" 461.76" 462.18" 462.60" 463.02" 463.44" 463.86" 464.28" 464.70" 465.12" 465.54" 465.96" 466.38" 466.80" 467.22" 467.64" 468.06" 468.48" 468.90" 469.32" 469.74" 470.16" 470.58" 471.00" 471.42" 471.84" 472.26" 472.68" 473.10" 473.52" 473.94" 474.36" 474.78" 475.20" 475.62" 476.04" 476.46" 476.88" 477.30" 477.72" 478.14" 478.56" 478.98" 479.40" 479.82" 480.24" 480.66" 481.08" 481.50" 481.92" 482.34" 482.76" 483.18" 483.60" 484.02" 484.44" 484.86" 485.28" 485.70" 486.12" 486.54" 486.96" 487.38" 487.80" 488.22" 488.64" 489.06" 489.48" 489.90" 490.32" 490.74" 491.16" 491.58" 492.00" 492.42" 492.84" 493.26" 493.68" 494.10" 494.52" 494.94" 495.36" 495.78" 496.20" 496.62" 497.04" 497.46" 497.88" 498.30" 498.72" 499.14" 499.56" 500.00

Attestation of Conformity
No. NB 14 06 86602 002

Holder of Certificate: Hangzhou EVT Electrical Co., Ltd.
Huantan Industrial Zone, Jinhua Town, Xiaoshan District, 311033 Hangzhou, PEOPLE'S REPUBLIC OF CHINA

Product: **Metal conduits Metal conduits and Accessories**

Model(s): **EMT series, IMC series, RMC series, B31 series, B5450 series, B1 series, B3 series, B30 series, B7 series, 150 series, B215 series, B215 series, 540 series, 580 series, 1540 series, 5415 series, 541 series, ELB series, ELL series, ELR series, EC series, ET series, BEC1 series, BE1 series, PE1 series, PE2 series, SC11 series, SC2 series, 2301 series, 2301 series, E1 series, SC1 series, SC11 series, C-1 series, C1 series, Q1 series, Q1-1 series, A1 series, LB series, LL series, LR series, C series, T series, PE11 series, B2 series, B1-1 series, B2-1 series, B1-2 series, B2-2 series, V202 series**

Parameters: **Conductor: Lower/Upper temperature range: 45°C / 100°C; Resistance to external influences: IP 30; Classification: 440**

Tested according to: **EN 61386-21:2010 EN 61386-21:2008**

This Attestation of Conformity is issued on a voluntary basis according to the Low Voltage Directive 2006/95/EC relating to electrical equipment designed for use within certain voltage limits. It confirms that the tested equipment complies with the principal protection requirements of the directive. It refers only to the particular samples submitted for testing and certification. See also notes enclosed.

Test report no.: T04101322902-00

Date: 2014-06-23

CE After preparation of the necessary technical documentation as well as the EC conformity declaration the required CE marking can be affixed on the product. Other relevant directives have to be observed.

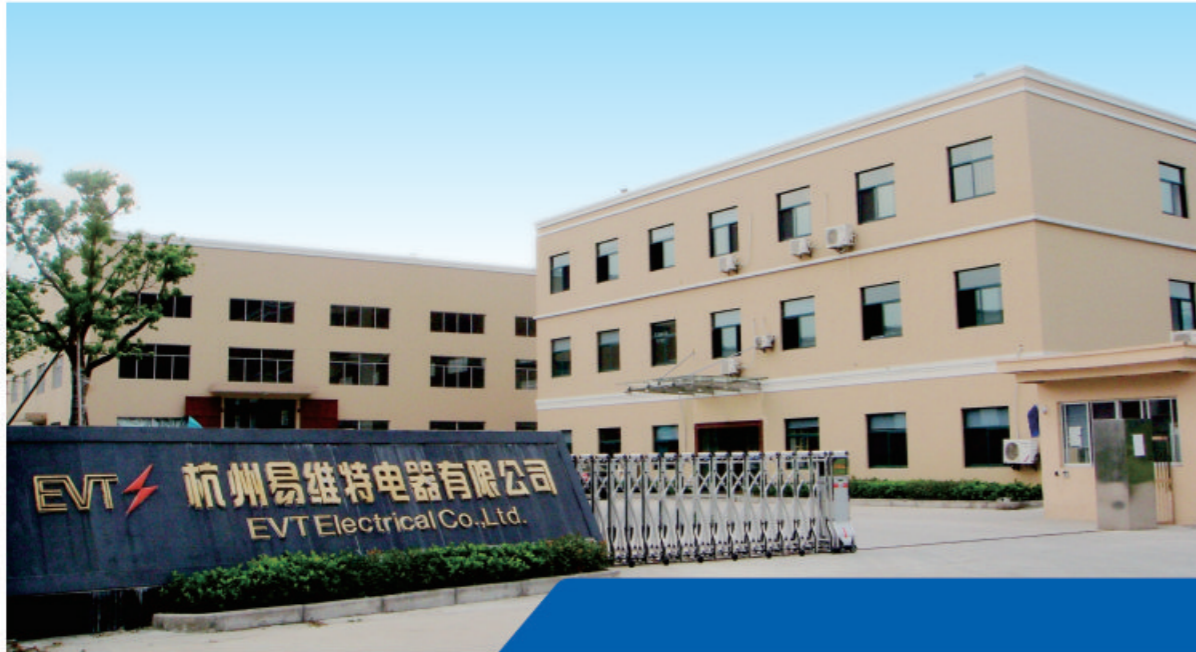
Page 1 of 2

TUV SUD Product Service GmbH | Zertifikatsstelle | Röhrenstraße 61 | 80339 München | Germany | TUV®

Attestation of Conformity
No. NB 14 06 86602 002

Attachment

Name	Model	Specification
EMT Conduit	E1-E7 series	1/2" 3/4" 1" 1 1/4" 1 1/2" 2" 2 1/2" 3" 3 1/2" 4" 4 1/2" 5" 5 1/2" 6" 6 1/2" 7" 7 1/2" 8" 8 1/2" 9" 9 1/2" 10" 10 1/2" 11" 11 1/2" 12" 12 1/2" 13" 13 1/2" 14" 14 1/2" 15" 15 1/2" 16" 16 1/2" 17" 17 1/2" 18" 18 1/2" 19" 19 1/2" 20" 20 1/2" 21" 21 1/2" 22" 22 1/2" 23" 23 1/2" 24" 24 1/2" 25" 25 1/2" 26" 26 1/2" 27" 27 1/2" 28" 28 1/2" 29" 29 1/2" 30" 30 1/2" 31" 31 1/2" 32" 32 1/2" 33" 33 1/2" 34" 34 1/2" 35" 35 1/2" 36" 36 1/2" 37" 37 1/2" 38" 38 1/2" 39" 39 1/2" 40" 40 1/2" 41" 41 1/2" 42" 42 1/2" 43" 43 1/2" 44" 44 1/2" 45" 45 1/2" 46" 46 1/2" 47" 47 1/2" 48" 48 1/2" 49" 49 1/2" 50" 50 1/2" 51" 51 1/2" 52" 52 1/2" 53" 53 1/2" 54" 54 1/2" 55" 55 1/2" 56"



About Us

EVT Electrical is an UL listed, CE attested and ISO 9001:2008 certified factory, engaged in manufacturing of electrical conduit fittings. Our products include EMT tubings, IMC conduits, IMC elbows, RMC conduits, IMC/Rigid couplings, BS31 conduits, BS4568 conduits, lock nuts, conduit bushings, liquid-tight connectors, and metal boxes. We also provide OEM service.



Over the years we've developed the expertise and knowledge to meet the needs of global market. And we've made the investments in facilities, systems and people so we can deliver the materials in time and in good condition. That's why EVT enjoys a well-deserved reputation among our customers. Our past is the foundation for our future. We spare no expense on innovation.

As a company with full responsibility for its employees and clients, EVT not only sells our products, but also communicates with our commitments. You buy our products, you buy our guarantee.



Product: Rigid Steel Conduit - BS 4568 : Part 1 : 1970
Test Report: BS EN 61386-21:2010, IEC 61386-1:2008
Certificate: CE



Trade Size	Outside Diameter		Thickness	Length	Minor Diameter		Thread Length		Pitch	Packing
	Min.	Max.			Min.	Max.	Min.	Max.		
20mm	19.59mm	19.97mm	1.6 ±0.15mm	3.75m.	17.80mm	18.13mm	13mm	15mm	1.5mm	20
25mm	24.59mm	24.97mm	1.6 ±0.15mm	3.75m.	22.78mm	23.13mm	16mm	18mm	1.5mm	15
32mm	31.59mm	31.97mm	1.6 ±0.15mm	3.75m.	29.78mm	30.13mm	18mm	20mm	1.5mm	10

Application: used as raceway systems for electrical wiring in residential, commercial and industrial area

Note: available in both Class 3(Indoor Use) and Class 4(Indoor & Outdoor Use); Both ends are threaded, one end is supplied with one steel coupling and the other end with thread protector

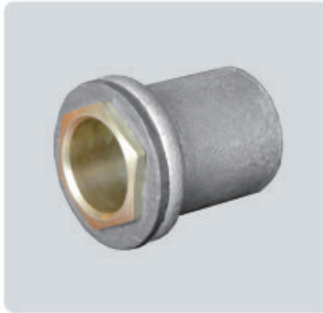
Product: Rigid Steel Conduit - BS 31 : 1940 (Class B)
Test Report: BS EN 61386-21:2010, IEC 61386-1:2008
Certificate: CE



Trade Size	Outside Diameter		Thickness	Length	Minor Diameter		Thread Length		Pitch	Packing
	Min.	Max.			Min.	Max.	Min.	Max.		
3/4"	18.76 mm	19.05mm	1.6 ±0.07mm	3.75m.	16.64mm	17.01mm	12.7mm	14.2mm	1.59mm	20
1"	25.11 mm	25.40mm	1.6 ±0.07mm	3.75m.	22.99mm	23.36mm	15.9mm	17.4mm	1.59mm	15
1-1/4"	31.46 mm	31.75mm	1.6 ±0.07mm	3.75m.	29.34mm	29.71mm	17.5mm	19.0mm	1.59mm	10
1-1/2"	37.80 mm	38.10mm	1.8 ±0.07mm	3.75m.	35.37mm	35.77mm	19.1mm	20.6mm	1.81mm	5
2"	50.50 mm	50.80mm	2.0 ±0.07mm	3.75m.	48.07mm	48.47mm	22.3mm	23.8mm	1.81mm	5

Application: used as raceway systems for electrical wiring in residential, commercial and industrial area, suitable for indoor and semi outdoor use

Note: Both ends are threaded, one end is supplied with one steel coupling and the other end with thread protector



Product: Flange Coupling
Material: Malleable Iron, Complete with washer and brass bush
Finish: Hot Dip Galvanized

EVT#	Trade Size	Shelf QTY	Master QTY
BSFC1	20mm	*	250
BSFC2	25mm	*	200
BSFC3	32mm	*	100

Application: for use to connect steel conduits to boxes



Product: Coupling
Test Report: BS EN 61386-21:2010, IEC 61386-1:2008
Certificate: CE
Material: Steel
Finish: Electro-galvanized / Hot Dip Galvanized / Black Enamel

EVT#	Trade Size	Shelf QTY	Master QTY
61-1	20mm	40	400
62-1	25mm	30	300
63-1	32mm	*	200

Application: for use to couple two ends of steel conduits or join other components of a conduit system



Product: Nipple
Material: Steel
Finish: Zinc Plated

EVT#	Trade Size	Shelf QTY	Master QTY
BSNP1	20mm	*	1000
BSNP2	25mm	*	500
BSNP3	32mm	*	300

Application: has no unthreaded area; when screwed tightly between two female fittings, very little of the nipple remains exposed.



Product: Inspection Bend
Material: Malleable Iron
Finish: Hot Dip Galvanized / Black Enamel

EVT#	Trade Size	Shelf QTY	Master QTY
MV20	20mm	*	100
MV25	25mm	*	80
MV32	32mm	*	50

Application: for use to couple two ends of steel conduits when 90 degree turns, inspection, pulling and maintenance are needed

Note: Lid and steel screws included



Product: Inspection Elbow
Material: Malleable Iron
Finish: Hot Dip Galvanized / Black Enamel

EVT#	Trade Size	Shelf QTY	Master QTY
MV20-1	20mm	*	100
MV25-1	25mm	*	80
MV32-1	32mm	*	50

Application: for use to couple two ends of steel conduits when 90 degree turns, inspection, pulling and maintenance are needed

Note: Lid and steel screws included



Product: Inspection Tee
Material: Malleable Iron
Finish: Hot Dip Galvanized / Black Enamel

EVT#	Trade Size	Shelf QTY	Master QTY
MV20-3	20mm	*	100
MV25-3	25mm	*	80
MV32-3	32mm	*	50

Application: for use to couple three ends of steel conduits when inspection, pulling and maintenance are needed

Note: Lid and steel screws included



Product: Solid Long Bend
Material: Steel
Finish: Galvanized

EVT#	Trade Size	Shelf QTY	Master QTY
BSB20	20mm	*	150
BSB25	25mm	*	100
BSB32	32mm	*	50

Application: for use to couple two ends of steel conduits when 90 degree turns are needed



Product: Solid Bend
Material: Malleable Iron
Finish: Hot Dip Galvanized / Black Enamel

EVT#	Trade Size	Shelf QTY	Master QTY
BSBS20	20mm	*	100
BSBS25	25mm	*	100
BSBS32	32mm	*	50

Application: for use to couple two ends of steel conduits when 90 degree turns are needed



Product: Distance Saddle
Material: Malleable Iron
Finish: Hot Dip Galvanized / Black Enamel

EVT#	Trade Size	Shelf QTY	Master QTY
V20	20mm	*	200
V25	25mm	*	150
V32	32mm	*	100

Application: Suitable for use when installing conduit with 5mm spacing distance in wet/hostile environment



Product: Hospital Saddle
Material: Malleable Iron
Finish: Hot Dip Galvanized / Black Enamel

EVT#	Trade Size	Shelf QTY	Master QTY
HV20	20mm	*	200
HV25	25mm	*	150
HV32	32mm	*	100

Application: Suitable for use when installing conduit with 5mm spacing distance in wet/hostile environment



Product: Spacer Bar Saddle
Test Report: BS EN 61386-21:2010, IEC 61386-1:2008
Certificate: CE
Material: Steel
Finish: Galvanized / Black Enamel

EVT#	Trade Size	Shelf QTY	Master QTY
V201	20mm	*	1000
V202	25mm	*	500
V203	32mm	*	500

Application: for use to mount conduits to any surface in dry environment



Product: Half Saddle
Material: Steel
Finish: Galvanized

EVT#	Trade Size	Shelf QTY	Master QTY
BSHS20	20mm	150	1500
BSHS25	25mm	100	1000
BSHS32	32mm	50	500
BSHS38	38mm	25	250
BSHS50	50mm	20	200

Application: for use to mount steel conduits or flexible conduits to any surface in dry environment



Product: Plain Saddle
Material: Steel
Finish: Galvanized

EVT#	Trade Size	Shelf QTY	Master QTY
BSFS20	20mm	100	1000
BSFS25	25mm	50	500
BSFS32	32mm	50	500
BSFS38	38mm	25	250
BSFS50	50mm	20	200

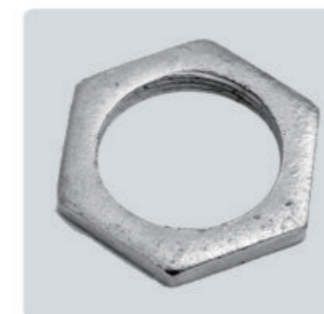
Application: for use to mount steel conduits or flexible conduits to any surface in dry environment



Product: Nail Strap
Material: Steel
Finish: Galvanized

EVT#	Trade Size	Shelf QTY	Master QTY
CFC20	20mm	*	1000
CFC25	25mm	*	1000
CFC32	32mm	*	500

Application: for use to secure steel conduits or flexible conduits to a wood or masonry surface



Product: Hexagonal Locknut
Material: Steel
Finish: Galvanized / Black Enamel

EVT#	Trade Size	Shelf QTY	Master QTY
BSA1	20mm X 3mm	300	3000
BSA2	25mm X 3mm	200	2000
BSA3	32mm X 3mm	150	1500

BSA11	20mm X 6mm	200	2000
BSA12	25mm X 6mm	100	1000
BSA13	32mm X 6mm	100	1000

Application: for use to lock conduits to junction boxes



Product: Locking Ring
Material: Steel
Finish: Galvanized

EVT#	Trade Size	Shelf QTY	Master QTY
BSA21	20mm X 3mm	300	3000
BSA22	25mm X 3mm	200	2000
BSA23	32mm X 3mm	150	1500
BSA31	20mm X 6mm	200	2000
BSA32	25mm X 6mm	100	1000
BSA33	32mm X 6mm	100	1000

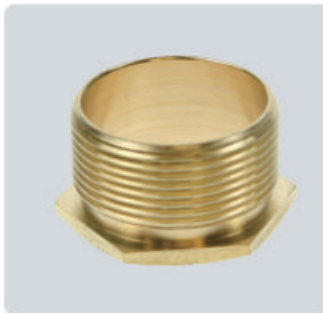
Application: for use to lock conduits to junction boxes



Product: Female Bush
Material: Brass
Finish: Self Color

EVT#	Trade Size	Shelf QTY	Master QTY
FB1	20mm	400	4000
FB2	25mm	200	2000
FB3	32mm	200	2000

Application: for use to male fittings such as male bush



Product: Long Male Bush
Test Report: BS EN 61386-21:2010, IEC 61386-1:2008
Certificate: CE
Material: Brass
Finish: Self Color

EVT#	Trade Size	Shelf QTY	Master QTY
61-2	20mm	200	2000
62-2	25mm	100	1000
63-2	32mm	50	500

Application: for use with female fittings such as coupler and female bush



Product: Short Male Bush
Test Report: BS EN 61386-21:2010, IEC 61386-1:2008
Certificate: CE
Material: Brass
Finish: Self Color

EVT#	Trade Size	Shelf QTY	Master QTY
61-3	20mm	200	2000
62-3	25mm	100	1000
63-3	32mm	100	1000

Application: for use with female fittings such as coupler and female bush



Product: Terminal Box
Test Report: BS EN 61386-21:2010, IEC 61386-1:2008
Certificate: CE
Material: Malleable Iron
Finish: Hot Dip Galvanized / Black Enamel

EVT#	Trade Size	Depth	QTY / Carton
BS101	20mm	25mm	100
BS102	25mm	28mm	100
BS103	32mm	38mm	50

Application: for use to join steel conduits, allowing access for inspection, pulling and maintenance
Note: supplied without covers or fixing screws unless ordered



Product: Through Box
Test Report: BS EN 61386-21:2010, IEC 61386-1:2008
Certificate: CE
Material: Malleable Iron
Finish: Hot Dip Galvanized / Black Enamel

EVT#	Trade Size	Depth	QTY / Carton
BS201	20mm	25mm	100
BS202	25mm	28mm	100
BS203	32mm	38mm	50

Application: for use to join steel conduits, allowing access for inspection, pulling and maintenance
Note: supplied without covers or fixing screws unless ordered



Product: Angle Box
Test Report: BS EN 61386-21:2010, IEC 61386-1:2008
Certificate: CE
Material: Malleable Iron
Finish: Hot Dip Galvanized / Black Enamel

EVT#	Trade Size	Depth	QTY / Carton
BS211	20mm	25mm	100
BS212	25mm	28mm	100
BS213	32mm	38mm	50

Application: for use to join steel conduits, allowing access for inspection, pulling and maintenance
Note: supplied without covers or fixing screws unless ordered



Product: Tee Box
Test Report: BS EN 61386-21:2010, IEC 61386-1:2008
Certificate: CE
Material: Malleable Iron
Finish: Hot Dip Galvanized / Black Enamel

EVT#	Trade Size	Depth	QTY / Carton
BS301	20mm	25mm	100
BS302	25mm	28mm	100
BS303	32mm	38mm	50

Application: for use to join steel conduits, allowing access for inspection, pulling and maintenance
Note: supplied without covers or fixing screws unless ordered



Product: Intersection Box
Test Report: BS EN 61386-21:2010, IEC 61386-1:2008
Certificate: CE
Material: Malleable Iron
Finish: Hot Dip Galvanized / Black Enamel

EVT#	Trade Size	Depth	QTY / Carton
BS401	20mm	25mm	100
BS402	25mm	28mm	100
BS403	32mm	38mm	50

Application: for use to join steel conduits, allowing access for inspection, pulling and maintenance
Note: supplied without covers or fixing screws unless ordered



Product: Branch Two Way Box - U
Test Report: BS EN 61386-21:2010, IEC 61386-1:2008
Certificate: CE
Material: Malleable Iron
Finish: Hot Dip Galvanized / Black Enamel

EVT#	Trade Size	Depth	QTY / Carton
BS221	20mm	25mm	100
BS222	25mm	28mm	100
BS223	32mm	38mm	50

Application: for use to join steel conduits, allowing access for inspection, pulling and maintenance
Note: supplied without covers or fixing screws unless ordered



Product: Branch Three Way Box - Y
Test Report: BS EN 61386-21:2010, IEC 61386-1:2008
Certificate: CE
Material: Malleable Iron
Finish: Hot Dip Galvanized / Black Enamel

EVT#	Trade Size	Depth	QTY / Carton
BS311	20mm	25mm	100
BS312	25mm	28mm	100
BS313	32mm	38mm	50

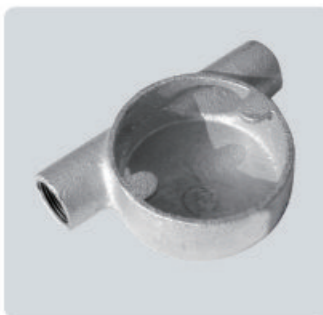
Application: for use to join steel conduits, allowing access for inspection, pulling and maintenance
Note: supplied without covers or fixing screws unless ordered



Product: Twin Through Box - H
Test Report: BS EN 61386-21:2010, IEC 61386-1:2008
Certificate: CE
Material: Malleable Iron
Finish: Hot Dip Galvanized / Black Enamel

EVT#	Trade Size	Depth	QTY / Carton
BS411	20mm	25mm	100
BS412	25mm	28mm	100
BS413	32mm	38mm	50

Application: for use to join steel conduits, allowing access for inspection, pulling and maintenance
Note: supplied without covers or fixing screws unless ordered



Product: Tangent Through Box
Test Report: BS EN 61386-21:2010, IEC 61386-1:2008
Certificate: CE
Material: Malleable Iron
Finish: Hot Dip Galvanized / Black Enamel

EVT#	Trade Size	Depth	QTY / Carton
BS231	20mm	25mm	100
BS232	25mm	28mm	100

Application: for use to join steel conduits, allowing access for inspection, pulling and maintenance
Note: supplied without covers or fixing screws unless ordered



Product: Tangent Angle Box
Test Report: BS EN 61386-21:2010, IEC 61386-1:2008
Certificate: CE
Material: Malleable Iron
Finish: Hot Dip Galvanized / Black Enamel

EVT#	Trade Size	Depth	QTY / Carton
BS241	20mm	25mm	100
BS242	25mm	28mm	100

Application: for use to join steel conduits, allowing access for inspection, pulling and maintenance
Note: supplied without covers or fixing screws unless ordered



Product: Tangent Tee Box
Test Report: BS EN 61386-21:2010, IEC 61386-1:2008
Certificate: CE
Material: Malleable Iron
Finish: Hot Dip Galvanized / Black Enamel

EVT#	Trade Size	Depth	QTY / Carton
BS321	20mm	25mm	100
BS322	25mm	28mm	100

Application: for use to join steel conduits, allowing access for inspection, pulling and maintenance
Note: supplied without covers or fixing screws unless ordered



Product: Terminal Box Extension Pattern Type
Test Report: BS EN 61386-21:2010, IEC 61386-1:2008
Certificate: CE
Material: Malleable Iron
Finish: Hot Dip Galvanized / Black Enamel

EVT#	Trade Size	Depth	QTY / Carton
BS101EP	20mm	25mm	100
BS102EP	25mm	28mm	100

Application: for use to join steel conduits, allowing access for inspection, pulling and maintenance
Note: supplied without covers or fixing screws unless ordered



Product: Through Box Extension Pattern Type
Test Report: BS EN 61386-21:2010, IEC 61386-1:2008
Certificate: CE
Material: Malleable Iron
Finish: Hot Dip Galvanized / Black Enamel

EVT#	Trade Size	Depth	QTY / Carton
BS201EP	20mm	25mm	100
BS202EP	25mm	28mm	100

Application: for use to join steel conduits, allowing access for inspection, pulling and maintenance
Note: supplied without covers or fixing screws unless ordered



Product: Angle Box Extension Pattern Type
Test Report: BS EN 61386-21:2010, IEC 61386-1:2008
Certificate: CE
Material: Malleable Iron
Finish: Hot Dip Galvanized / Black Enamel

EVT#	Trade Size	Depth	QTY / Carton
BS211EP	20mm	25mm	100
BS212EP	25mm	28mm	100

Application: for use to join steel conduits, allowing access for inspection, pulling and maintenance
Note: supplied without covers or fixing screws unless ordered



Product: Tee Box Extension Pattern Type
Test Report: BS EN 61386-21:2010, IEC 61386-1:2008
Certificate: CE
Material: Malleable Iron
Finish: Hot Dip Galvanized / Black Enamel

EVT#	Trade Size	Depth	QTY / Carton
BS301EP	20mm	25mm	100
BS302EP	25mm	28mm	100

Application: for use to join steel conduits, allowing access for inspection, pulling and maintenance
Note: supplied without covers or fixing screws unless ordered



Product: Intersection Box Extension Pattern Type
Test Report: BS EN 61386-21:2010, IEC 61386-1:2008
Certificate: CE
Material: Malleable Iron
Finish: Hot Dip Galvanized / Black Enamel

EVT#	Trade Size	Depth	QTY / Carton
BS401EP	20mm	25mm	100
BS402EP	25mm	28mm	100

Application: for use to join steel conduits, allowing access for inspection, pulling and maintenance
Note: supplied without covers or fixing screws unless ordered



Product: Back Outlet Box
Test Report: BS EN 61386-21:2010, IEC 61386-1:2008
Certificate: CE
Material: Malleable Iron
Finish: Hot Dip Galvanized / Black Enamel

EVT#	Trade Size	Depth	QTY / Carton
BS111	20mm	25mm	100
BS112	25mm	28mm	100

Application: for use to join steel conduits, allowing access for inspection, pulling and maintenance
Note: supplied without covers or fixing screws unless ordered



Product: Terminal & Back Outlet Box
Test Report: BS EN 61386-21:2010, IEC 61386-1:2008
Certificate: CE
Material: Malleable Iron
Finish: Hot Dip Galvanized / Black Enamel

EVT#	Trade Size	Depth	QTY / Carton
BS101B	20mm	25mm	100
BS102B	25mm	28mm	100

Application: for use to join steel conduits, allowing access for inspection, pulling and maintenance
Note: supplied without covers or fixing screws unless ordered



Product: Through & Back Outlet Box
Test Report: BS EN 61386-21:2010, IEC 61386-1:2008
Certificate: CE
Material: Malleable Iron
Finish: Hot Dip Galvanized / Black Enamel

EVT#	Trade Size	Depth	QTY / Carton
BS201B	20mm	25mm	100
BS202B	25mm	28mm	100

Application: for use to join steel conduits, allowing access for inspection, pulling and maintenance
Note: supplied without covers or fixing screws unless ordered



Product: Angle & Back Outlet Box
Test Report: BS EN 61386-21:2010, IEC 61386-1:2008
Certificate: CE
Material: Malleable Iron
Finish: Hot Dip Galvanized / Black Enamel

EVT#	Trade Size	Depth	QTY / Carton
BS211B	20mm	25mm	100
BS212B	25mm	28mm	100

Application: for use to join steel conduits, allowing access for inspection, pulling and maintenance
Note: supplied without covers or fixing screws unless ordered



Product: Tee & Back Outlet Box
Test Report: BS EN 61386-21:2010, IEC 61386-1:2008
Certificate: CE
Material: Malleable Iron
Finish: Hot Dip Galvanized / Black Enamel

EVT#	Trade Size	Depth	QTY / Carton
BS301B	20mm	25mm	100
BS302B	25mm	28mm	100

Application: for use to join steel conduits, allowing access for inspection, pulling and maintenance
Note: supplied without covers or fixing screws unless ordered



Product: Intersection & Back Outlet Box
Test Report: BS EN 61386-21:2010, IEC 61386-1:2008
Certificate: CE
Material: Malleable Iron
Finish: Hot Dip Galvanized / Black Enamel

EVT#	Trade Size	Depth	QTY / Carton
BS401B	20mm	25mm	100
BS402B	25mm	28mm	100

Application: for use to join steel conduits, allowing access for inspection, pulling and maintenance
Note: supplied without covers or fixing screws unless ordered



Product: Terminal Box - Special Deep
Test Report: BS EN 61386-21:2010, IEC 61386-1:2008
Certificate: CE
Material: Malleable Iron
Finish: Hot Dip Galvanized / Black Enamel

EVT#	Trade Size	Depth	QTY / Carton
BS101SD	20mm	62mm	50
BS102SD	25mm	62mm	50

Application: for use to join steel conduits, allowing access for inspection, pulling and maintenance
Note: supplied without covers or fixing screws unless ordered



Product: Through Box - Special Deep
Test Report: BS EN 61386-21:2010, IEC 61386-1:2008
Certificate: CE
Material: Malleable Iron
Finish: Hot Dip Galvanized / Black Enamel

EVT#	Trade Size	Depth	QTY / Carton
BS201SD	20mm	62mm	50
BS202SD	25mm	62mm	50

Application: for use to join steel conduits, allowing access for inspection, pulling and maintenance
Note: supplied without covers or fixing screws unless ordered



Product: Angle Box - Special Deep
Test Report: BS EN 61386-21:2010, IEC 61386-1:2008
Certificate: CE
Material: Malleable Iron
Finish: Hot Dip Galvanized / Black Enamel

EVT#	Trade Size	Depth	QTY / Carton
BS211SD	20mm	62mm	50
BS212SD	25mm	62mm	50

Application: for use to join steel conduits, allowing access for inspection, pulling and maintenance
Note: supplied without covers or fixing screws unless ordered



Product: Tee Box - Special Deep
Test Report: BS EN 61386-21:2010, IEC 61386-1:2008
Certificate: CE
Material: Malleable Iron
Finish: Hot Dip Galvanized / Black Enamel

EVT#	Trade Size	Depth	QTY / Carton
BS301SD	20mm	62mm	50
BS302SD	25mm	62mm	50

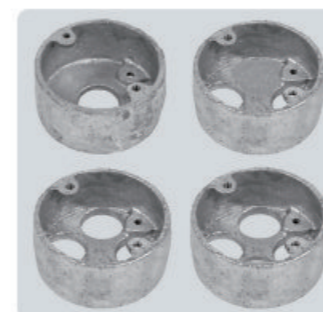
Application: for use to join steel conduits, allowing access for inspection, pulling and maintenance
Note: supplied without covers or fixing screws unless ordered



Product: Intersection Box - Special Deep
Test Report: BS EN 61386-21:2010, IEC 61386-1:2008
Certificate: CE
Material: Malleable Iron
Finish: Hot Dip Galvanized / Black Enamel

EVT#	Trade Size	Depth	QTY / Carton
BS401SD	20mm	62mm	50
BS402SD	25mm	62mm	50

Application: for use to join steel conduits, allowing access for inspection, pulling and maintenance
Note: supplied without covers or fixing screws unless ordered



Product: Looping In Box
Test Report: BS EN 61386-21:2010, IEC 61386-1:2008
Certificate: CE
Material: Malleable Iron
Finish: Hot Dip Galvanized / Black Enamel

EVT#	Trade Size	No. of Holes	QTY / Carton
BSLB1	for 20mm	1	100
BSLB2	for 20mm	2	100
BSLB3	for 20mm	3	100
BSLB4	for 20mm	4	100

Application: mainly used in suspended ceiling applications such as fire alarm installations



Product: Reducer
Material: Steel
Finish: Galvanized

EVT#	Trade Size	Shelf QTY	Master QTY
BSR1	20mm*16mm	*	500
BSR2	25mm*20mm	*	500
BSR3	32mm*20mm	*	250
BSR4	32mm*25mm	*	250

Application: for use to reduce the threaded opening in circular boxes or any female threaded fittings



Product: Stopping Plug
Material: Alloy / Brass
Finish: Self Color

EVT#	Trade Size	Shelf QTY	Master QTY
BSSP20	20mm	*	1000
BSSP25	25mm	*	1000
BSSP32	32mm	*	250

Application: for use to plug off unutilised sprouts on conduit junction boxes



Product: Circular Box Extension Ring
Test Report: BS EN 61386-21:2010, IEC 61386-1:2008
Certificate: CE
Material: Malleable Iron
Finish: Hot Dip Galvanized / Black Enamel

EVT#	Trade Size	Depth	QTY / Carton
CBER38	for 20mm & 25mm	38mm	100
CBER50	for 20mm & 25mm	50mm	50

Application: mainly used when additional fixing space is required in circular box wiring installations
Note: supplied without covers or fixing screws unless ordered



Product: Circular Box Cover
Test Report: BS EN 61386-21:2010, IEC 61386-1:2008
Certificate: CE
Material: Steel
Finish: Galvanized / Black Enamel

EVT#	Trade Size	Shelf QTY	Master QTY
BSL1	for 20mm & 25mm	*	1000
BSL2	for 32mm	*	500

Application: for use with circular boxes



Product: Circular Box Gasket
Test Report: BS EN 61386-21:2010, IEC 61386-1:2008
Certificate: CE
Material: Rubber
Finish: Self Color

EVT#	Trade Size	Shelf QTY	Master QTY
BSG1	for 20mm & 25mm	*	2000
BSG2	for 32mm	*	500

Application: for use with steel covers



Product: Dome Cover
Test Report: BS EN 61386-21:2010, IEC 61386-1:2008
Certificate: CE
Material: Malleable Iron
Finish: Hot Dip Galvanized / Black Enamel

EVT#	Trade Size	Shelf QTY	Master QTY
BSDC1	20mm	*	200
BSDC2	25mm	*	200

Application: for use to connect flexible adaptors, hanging light fittings, etc.



Product: Dome Cover
Test Report: BS EN 61386-21:2010, IEC 61386-1:2008
Certificate: CE
Material: Steel
Finish: Galvanized / Black Enamel

EVT#	Trade Size	Shelf QTY	Master QTY
BSDC1S	20mm	*	200
BSDC2S	25mm	*	200

Application: for use to connect flexible adaptors, hanging light fittings, etc.



Product: Hook Plate
Material: Steel
Finish: Galvanized

EVT#	Trade Size	Shelf QTY	Master QTY
BSHC1	for 20mm & 25mm	*	200

Application: often used when suspending light fittings from ceilings or lighting trunking installations



Product: Male Hook
Material: Malleable Iron
Finish: Hot Dip Galvanized

EVT#	Trade Size	Shelf QTY	Master QTY
MH20	20mm	*	500

Application: often used with dome cover when suspending light fittings from ceilings or lighting trunking installations



Product: Switch & Socket Box 1 Gang (73mm X 73mm)
Material: Steel
Finish: Galvanized

EVT#	Depth	Thickness	Knockouts	QTY/ Carton
MB116	16mm	0.8mm ~ 1.2mm	-	100
MB125	25mm	0.8mm ~ 1.2mm	20mm	100
MB135	35mm	0.8mm ~ 1.2mm	20&25mm	100
MB147	47mm	0.8mm ~ 1.2mm	20&25mm	100

Application: used for switches, outlets or used as a small junction box



Product: Switch & Socket Box 2 Gang (130mm X 73mm)
Material: Steel
Finish: Galvanized

EVT#	Depth	Thickness	Knockouts	QTY/ Carton
MB225	25mm	0.8mm ~ 1.2mm	20mm	50
MB235	35mm	0.8mm ~ 1.2mm	20&25mm	50
MB247	47mm	0.8mm ~ 1.2mm	20&25mm	50

Application: used for switches, outlets or used as a small junction box



Product: Switch & Socket Box Dual (73mm X 73mm + 73mm X 73mm)
Material: Steel
Finish: Galvanized

EVT#	Depth	Thickness	Knockouts	QTY/ Carton
MB1135	35mm	0.8mm ~ 1.2mm	20mm	50

Application: used for switches, outlets or used as junction box



Product: Strut Channel
Test Report: BS EN 61386-21:2010, IEC 61386-1:2008
Certificate: CE
Material: Steel
Finish: Pre-galvanized / Hot Dip Galvanized

Cross Section		Wall Thickness		Length	
Metric	US	Metric	US	Metric	US
41mm X 41mm	1-5/8" X 1-5/8"	1.5mm	16Ga.	3.05m	10ft
41mm X 41mm	1-5/8" X 1-5/8"	1.9mm	14Ga.	3.05m	10ft
41mm X 41mm	1-5/8" X 1-5/8"	2.7mm	12Ga.	3.05m	10ft
41mm X 41mm	1-5/8" X 1-5/8"	2.0mm	0.079"	3.05m	10ft
41mm X 41mm	1-5/8" X 1-5/8"	2.5mm	0.098"	3.05m	10ft

41mm X 21mm	1-5/8" X 13/16"	1.5mm	16Ga.	3.05m	10ft
41mm X 21mm	1-5/8" X 13/16"	1.9mm	14Ga.	3.05m	10ft
41mm X 21mm	1-5/8" X 13/16"	2.7mm	12Ga.	3.05m	10ft
41mm X 21mm	1-5/8" X 13/16"	2.0mm	0.079"	3.05m	10ft
41mm X 21mm	1-5/8" X 13/16"	2.5mm	0.098"	3.05m	10ft

Application: for use to support conduits, fixtures, and ventilation systems from beams and other structural systems



Product: Threaded Rod
Material: Steel
Application: brings versatility to jobsite, from hanging and mounting to retrofitting and bracing.

Trade Size	Diameter	Thread	Tensile Strength (PSI)
1/4" X 3Meter	1/4"	1/4"-20	60,000
3/8" X 3Meter	3/8"	3/8"-16	60,000
1/2" X 3Meter	1/2"	1/2"-13	60,000

M6 X 3Meter	0.236"	M6	60,000
M8 X 3Meter	0.315"	M8	60,000
M10 X 3Meter	0.394"	M10	60,000
M12 X 3Meter	0.472"	M12	60,000
M14 X 3Meter	0.551"	M14	60,000
M16 X 3Meter	0.630"	M16	60,000
M20 X 3Meter	0.787"	M20	60,000
M24 X 3Meter	0.945"	M24	60,000
M27 X 3Meter	1.063"	M27	60,000
M30 X 3Meter	1.181"	M30	60,000



Product: Channel Nut with Spring
Material: Steel
Application: for use to attach strut fittings to the open face of channels

EVT#	Trade Size	Shelf QTY	Master QTY
CNS1	M6	*	200
CNS2	M8	*	200
CNS3	M10	*	200
CNS4	M12	*	200
CNS9	1/4"	*	200
CNS10	5/16"	*	200
CNS11	3/8"	*	200
CNS12	1/2"	*	200



Product: Top Beam Clamp
 Material: Malleable Iron
 Finish: Hot Dip Galvanized

EVT#	Trade Size	Shelf QTY	Master QTY
BC11	M8	*	100
BC12	M10	*	100
BC13	M12	*	80

Application: Clamps on beam, girder or similar structure to provide amounting base



Product: Super Flexible Conduit
 Test Report: BS EN 61386-23:2004, IEC 61386-1:2008
 Certificate: CE
 Material: Steel
 Finish: Galvanized

Application: used primarily in dry areas where it would be impractical to install non-flexible conduit

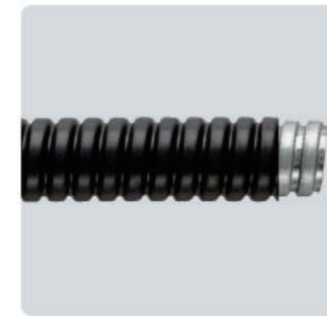
EVT#	Trade Size	Diameter(mm)		Inside Bend Radius(mm)	Operating Temperature Range	IP Rating	Meters / Coil
		Internal	External				
BSGF10	10mm	7.0	9.0	25	-50°C to +300°C	IP40	50
BSGF12	12mm	10.0	13.0	29	-50°C to +300°C	IP40	50
BSGF16	16mm	13.0	16.0	33	-50°C to +300°C	IP40	50
BSGF20	20mm	17.0	20.5	36	-50°C to +300°C	IP40	50
BSGF25	25mm	21.0	25.0	40	-50°C to +300°C	IP40	50
BSGF32	32mm	28.5	32.0	48	-50°C to +300°C	IP40	25
BSGF40	40mm	37.5	41.5	59	-50°C to +300°C	IP40	25
BSGF50	50mm	48.5	53.0	72	-50°C to +300°C	IP40	25
BSGF308	3/8"	9.0	11.5	28	-50°C to +300°C	IP40	50
BSGF102	1/2"	12.5	15.0	32	-50°C to +300°C	IP40	50
BSGF508	5/8"	15.5	18.0	35	-50°C to +300°C	IP40	50
BSGF304	3/4"	19.0	22.0	37	-50°C to +300°C	IP40	50
BSGF100	1"	25.0	28.0	44	-50°C to +300°C	IP40	50
BSGF114	1-1/4"	32.0	34.0	52	-50°C to +300°C	IP40	25
BSGF112	1-1/2"	38.0	40.0	58	-50°C to +300°C	IP40	25
BSGF200	2"	50.0	53.0	73	-50°C to +300°C	IP40	25



Product: Flexible Adaptor
 Material: Brass
 Finish: Self Color

EVT#	Trade Size	Shelf QTY	Master QTY
BSFA1	20mm	*	400
BSFA2	25mm	*	300
BSFA3	32mm	*	200

Application: for use to connect flexible conduits to boxes
 Note: supplied with retaining screw and lock nut



Product: PVC Coated Flexible Conduit
 Test Report: BS EN 61386-23:2004, IEC 61386-1:2008
 Certificate: CE
 Material: Steel
 Finish: Galvanized, with PVC Coated

Application: used primarily in wet/hostile areas where it would be impractical to install non-flexible conduit

EVT#	Trade Size	Diameter(mm)		Inside Bend Radius(mm)	Operating Temperature Range	IP Rating	Meters / Coil
		Internal	External				
BSPF10	10mm	7.0	10.0	25	-15°C to +75°C	IP54	50
BSPF12	12mm	10.0	14.0	30	-15°C to +75°C	IP54	50
BSPF16	16mm	13.0	17.0	40	-15°C to +75°C	IP54	50
BSPF20	20mm	17.0	21.5	45	-15°C to +75°C	IP54	50
BSPF25	25mm	21.0	26.0	55	-15°C to +75°C	IP54	50
BSPF32	32mm	28.5	34.0	70	-15°C to +75°C	IP54	25
BSPF40	40mm	37.5	43.5	80	-15°C to +75°C	IP54	25
BSPF50	50mm	48.5	55.0	90	-15°C to +75°C	IP54	25
BSPF308	3/8"	9.0	12.0	28	-15°C to +75°C	IP54	50
BSPF102	1/2"	12.5	16.0	33	-15°C to +75°C	IP54	50
BSPF508	5/8"	15.5	19.0	41	-15°C to +75°C	IP54	50
BSPF304	3/4"	19.0	23.0	45	-15°C to +75°C	IP54	50
BSPF100	1"	25.0	29.0	60	-15°C to +75°C	IP54	50
BSPF114	1-1/4"	32.0	36.0	75	-15°C to +75°C	IP54	25
BSPF112	1-1/2"	38.0	42.0	80	-15°C to +75°C	IP54	25
BSPF200	2"	50.0	55.0	125	-15°C to +75°C	IP54	25